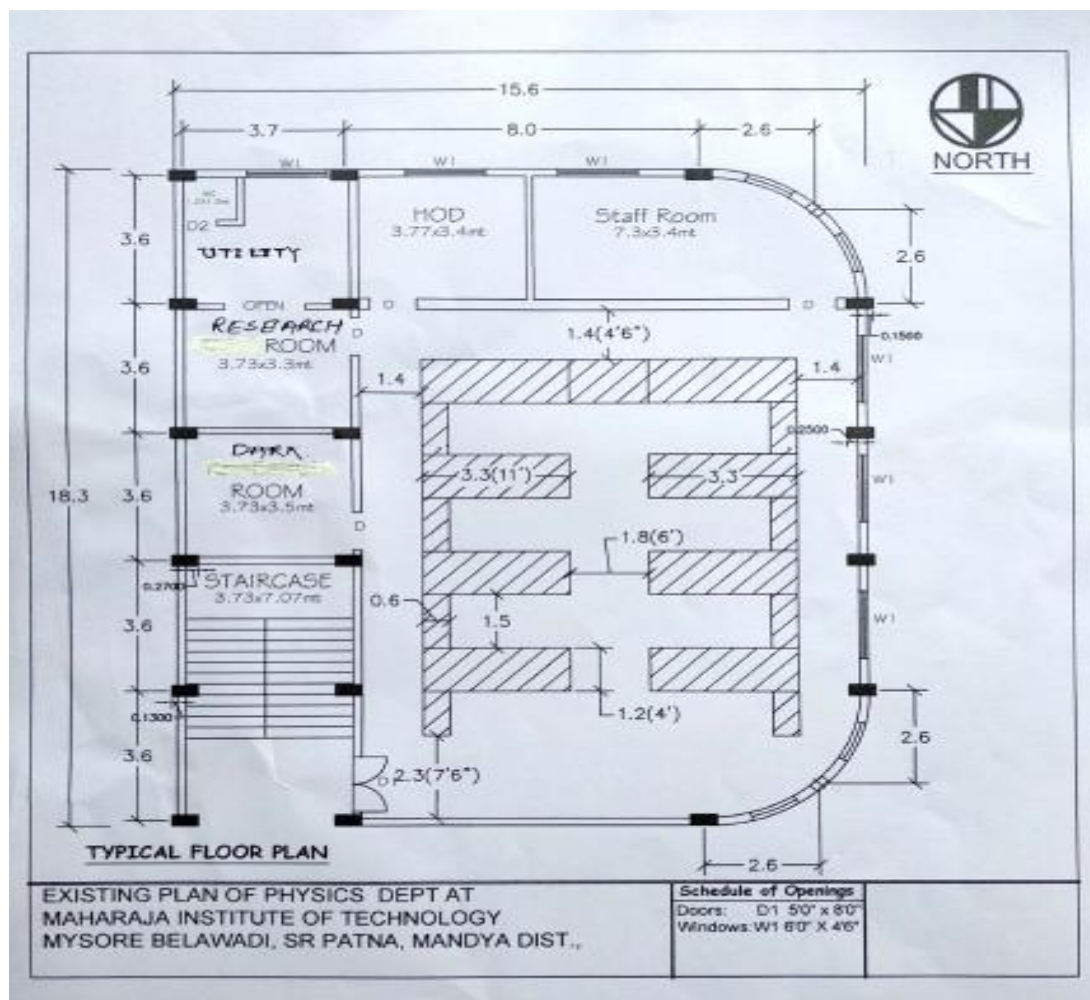


1. Engineering Physics Lab

Laboratories Details: Engineering Physics lab with dark room equipped with apparatus as per VTU syllabus.

Lab Layout: Main Lab: 22.3 Sq.ft

Dark Room: 13.32 Sq. Ft



Teaching Faculty Incharge: Mr. Chandan K. (Teaching Associate)

Non Teaching staff Incharge: Mr. Arun Kumar Y N. (lab Assistant)

Do's and Don'ts

Sl. No	Do's	Don'ts
1.	The objective of the laboratory is learning. The experiments are designed to illustrate phenomena in different areas of Physics and to expose you to measuring instruments. Conduct the experiments with interest and an attitude of learning.	Don't Leave A Mess: Clean up spills immediately. Cover the spill with paper towels and then wipe it up from the outside in, pushing the mess toward the center of the table, rather than the floor. Dispose of the paper in a proper container. Clean up all laboratory equipment, materials, supplies and work surfaces before leaving the lab.
2.	Protect yourself from getting electric shock.	Never make up readings or manipulate them to get a better fit for a graph.
3.	Work quietly and carefully (the whole purpose of experimentation is to make reliable measurements). If a particular reading appears wrong repeat the measurement carefully.	Don't Use Excessive Force: Some experiments require controlling knobs, plugging the patch cord's.. Using excessive force can potentially chip or break these.
4.	Be honest in recording and representing your data. In any event all the data recorded in the tables have to be faithfully displayed on the graph. All presentations of data, tables and graphs calculations should be neatly and carefully done.	Don't Eat or Drink in the Lab: Eat before entering or after leaving the lab. Food, gum, mints, cough drops and beverages are messy. They may get equipment dirty, contaminate samples, absorb chemicals or cause accidents.
5.	Graphs should be neatly drawn with pencil. Always label graphs and the axes and display units.	Do not copy reading or graph from other student.
6.	Come equipped with Physics lab manual, record book, calculator, scales, pencils etc.	Dress properly during a laboratory activity. Long hair, dangling jewelry and loose or baggy clothing are a hazard in the laboratory.
7.	Handle instruments with care. Report any breakage to the Instructor. Return all the equipment you have signed out for the purpose of your experiment.	Do not wander around the room, distract other students, startle other students or interfere with the laboratory experiments of others.
8.	All calculations should be completed in the laboratory. The results must be shown and the student must obtain the signature of the	Avoid stretching or pinching cords. Check cable, cords, and connectors periodically and immediately replace any items that show signs

	teacher before he or she leaves the laboratory. The student must submit the record in the following week for correction.	of cracking, chipping or other deterioration.
--	--	---

